

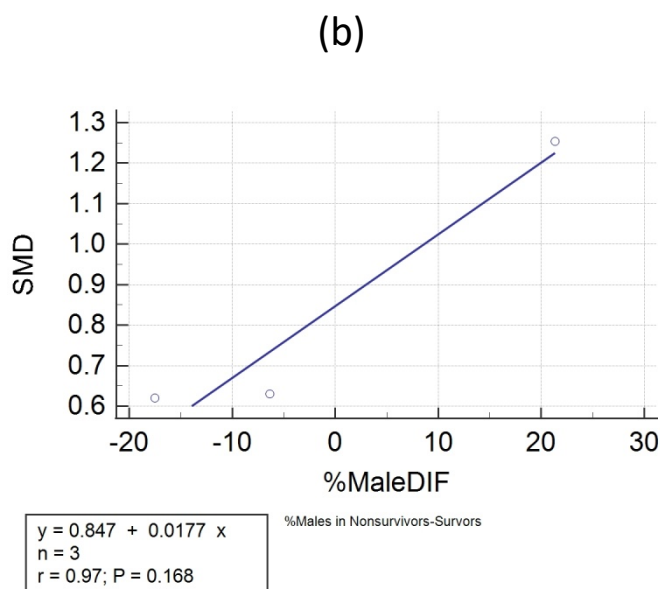
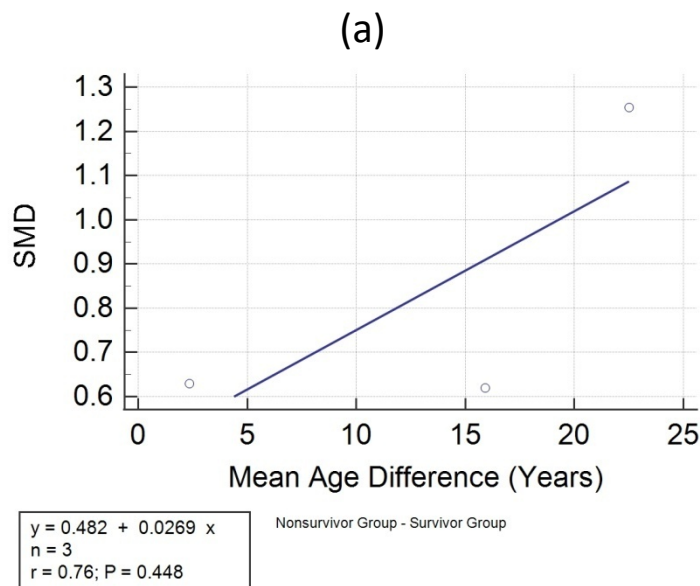
Association between neutrophil to lymphocyte ratio and mortality among community acquired pneumonia patients: a Meta-analysis

Supplementary File

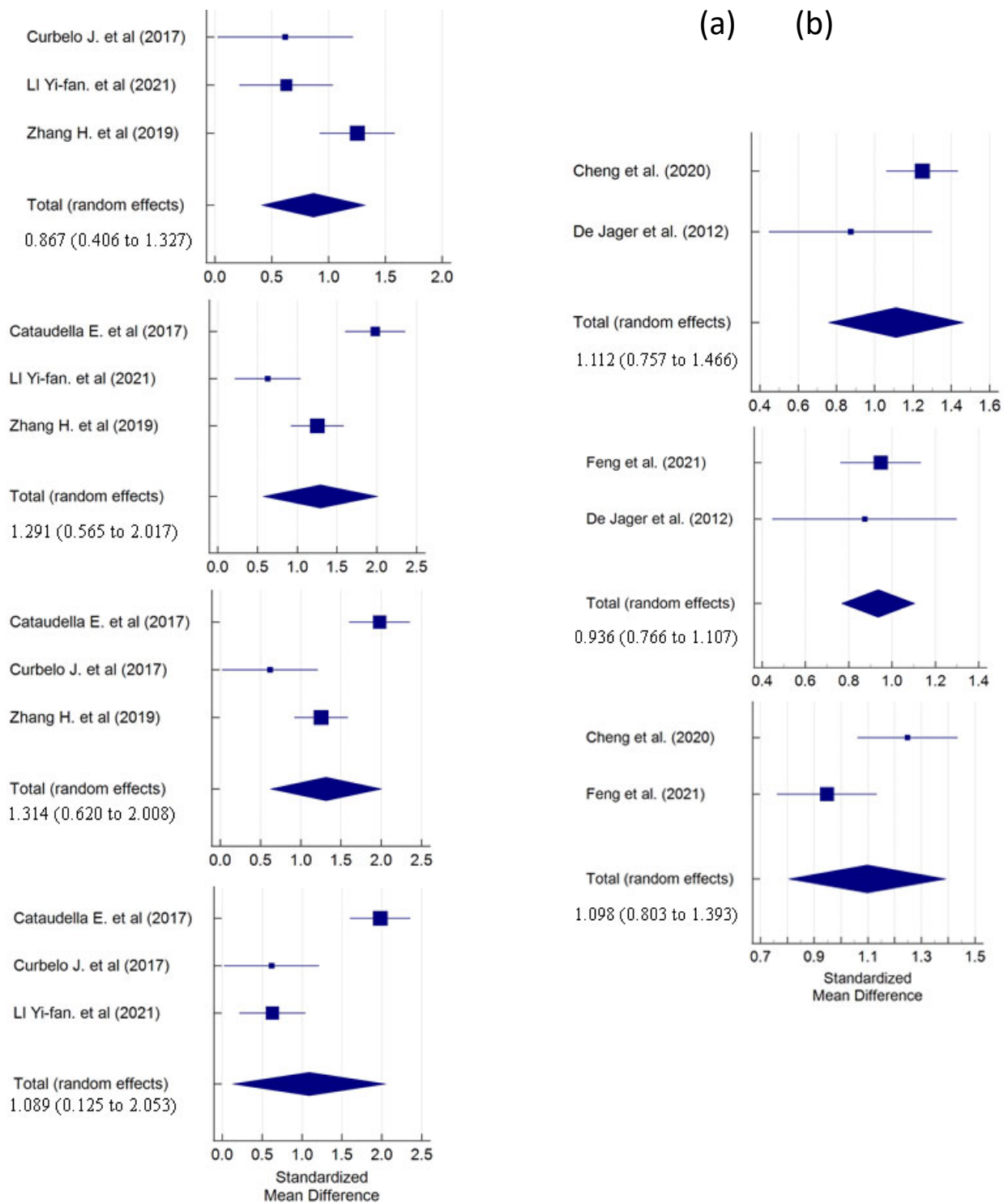
Search Strategy:

Pubmed	((neutrophil-lymphocyte) OR (Neutrophil-to-lymphocyte) OR (neutrophil lymphocyte) OR (neutrophil to lymphocyte)OR (NLR)) AND ((Community acquired pneumonia) OR (CAP))
Scopus	("neutrophil-lymphocyte" OR "Neutrophil-to-lymphocyte" OR (neutrophil AND lymphocyte) OR ("neutrophil to lymphocyte") OR (NLR)) AND ("Community acquired pneumonia" OR (CAP))
EBSCO	((neutrophil-lymphocyte) OR (Neutrophil-to-lymphocyte) OR (neutrophil lymphocyte) OR (neutrophil to lymphocyte)OR (NLR)) AND ((Community acquired pneumonia) OR (CAP))

Additional Figure 1. Meta-regression analysis : Association between SMD of the admission NLR and covariates (a) differences in age (years) (b) differences in proportion of male patients (%) between the Nonsurvivors and Survivors of among the 30-Day Mortality studies



Additional Figure 2. Sensitivity analysis of pooled NLR admission SMD values among (a) 30-day mortality studies (b) In-Hospital mortality studies.



Additional Figure 3. Sensitivity analysis of pooled AUC values regarding the ability of NLR to predict 30-Day mortality.

