



Monaldi Archives for Chest Disease

eISSN 2532-5264

<https://www.monaldi-archives.org/>

Publisher's Disclaimer. E-publishing ahead of print is increasingly important for the rapid dissemination of science. The **Early Access** service lets users access peer-reviewed articles well before print / regular issue publication, significantly reducing the time it takes for critical findings to reach the research community.

These articles are searchable and citable by their DOI (Digital Object Identifier).

The **Monaldi Archives for Chest Disease** is, therefore, e-publishing PDF files of an early version of manuscripts that have undergone a regular peer review and have been accepted for publication, but have not been through the typesetting, pagination and proofreading processes, which may lead to differences between this version and the final one.

The final version of the manuscript will then appear in a regular issue of the journal.

E-publishing of this PDF file has been approved by the authors.

All legal disclaimers applicable to the journal apply to this production process as well.

Monaldi Arch Chest Dis 2023 [Online ahead of print]

To cite this Article:

Cacciapuoti F, D'Onofrio A, Tarquinio LG, et al. **Sleep-disordered breathing and heart failure: a vicious cycle of cardiovascular risk.** *Monaldi Arch Chest Dis* doi: 10.4081/monaldi.2023.2660

 ©The Author(s), 2023
Licensee [PAGEPress](#), Italy

Note: The publisher is not responsible for the content or functionality of any supporting information supplied by the authors. Any queries should be directed to the corresponding author for the article.

All claims expressed in this article are solely those of the authors and do not necessarily represent those of their affiliated organizations, or those of the publisher, the editors and the reviewers. Any product that may be evaluated in this article or claim that may be made by its manufacturer is not guaranteed or endorsed by the publisher.



Sleep-disordered breathing and heart failure: a vicious cycle of cardiovascular risk

Fulvio Cacciapuoti,¹ Antonio D'Onofrio,² Luca Gaetano Tarquinio,³ Valentina Capone,¹ Ciro Mauro,¹
Raffaele Marfella,⁴ Federico Cacciapuoti⁴

¹Department of Cardiology, "A. Cardarelli" Hospital, Naples

²Department of Cardiology, "V. Monaldi" Hospital, Naples

³Post-graduate School of Emergency Medicine, "L. Vanvitelli" University, Naples

⁴Department of Internal Medicine, "L. Vanvitelli" University, Naples, Italy

Corresponding author: Fulvio Cacciapuoti, MD, Division of Cardiology, "A. Cardarelli" Hospital, Via A. Cardarelli 9, 80131 Naples, Italy. E-mail: fulvio.cacciapuoti@acardarelli.it

Contributions: FC, ADO and FC, study design; CM and VC data acquisition; RM and LGT revision; FC, FC, ADO and RM analysis, manuscript drafting. All the authors have read and approved the final version of the manuscript and agreed to be accountable for all aspects of the work.

Acknowledgments: Valentina Capone was supported by the CardioPath PhD programme.

Conflict of interest: Fulvio Cacciapuoti has been a speaker for Boehringer Ingelheim. The authors declare that they have no competing interests, and all authors confirm accuracy.

Funding: This research received no specific grant from any funding agency in the public, commercial, or not-for-profit sectors.

Ethics approval: This study was approved by the Institutional Ethics Committee.

Abstract

Sleep-disordered breathing (SDB) represents an important cardiovascular risk factor that is still often underestimated and not always optimally treated. Such breathing disorders can induce several harmful effects on the heart, also favoring the development of arrhythmias, ischemic heart disease, and left ventricular remodeling. Obstructive sleep apnea syndrome (OSA) is more frequent in heart failure patients than in the general population, promoting the worsening of left ventricular dysfunction. Both sleep apnea and heart failure have common clinical manifestations but also similar neurohormonal characteristics, both contributing to the development and progression of heart failure and resulting in increased mortality. The pathophysiological mechanisms underlying left ventricular dysfunction associated with SDB will be analyzed, and the potential therapeutic effects of gliflozins on OSA in heart failure patients will be discussed.

Key words: heart failure; sleep-disordered breathing; sleep apnea syndrome; sodium-glucose cotransporter type 2 inhibitors.

Introduction

Sleep-disordered breathing (SDB) significantly affects cardiovascular risk, contributing to the development of hypertension, arrhythmias, ischemic heart disease, and left ventricular remodeling, which can evolve up to heart failure. Because of the potential implications on cardiac morbidity and mortality, sleep-related breathing disorders are now considered among the main modifiable cardiovascular risk factors [1]. Among these, obstructive sleep apnea syndrome (OSA), characterized

by a cyclical reduction or interruption of breathing during sleep, is more frequent in patients with heart failure, especially if obese and hypertensive, favoring the progression of left ventricular dysfunction [2]. Obesity, hypertension, advanced age, and male sex are the main predisposing factors for the onset of both OSA and heart failure, making it difficult to recognize the border between these conditions. It should also be remembered that, among patients with heart failure and reduced ejection fraction (HFrEF), a percentage between 12 and 25% is affected by OSA, while up to 50% suffer from central apnea (CSA) [3,4]. In view of the close correlation between the progression of heart failure and sleep apnea, it is essential to early recognize and treat this class of sleep breathing disorders to reduce cardiovascular morbidity and mortality.

Sleep apneas and heart failure

Sleep apnea and heart failure share similar clinical manifestations, such as paroxysmal nocturnal dyspnea, fluid retention, and fatigue, and they also have overlapping neuro-hormonal characteristics, including reduced availability of nitric oxide and increased inflammatory indices. These conditions contribute to the development and progression of heart failure, starting with the form with preserved ejection fraction (HFpEF), which may subsequently lead to impaired left ventricular compliance, eventually causing HFrEF [5].

Previous studies have shown that nocturnal continuous positive airway pressure (CPAP) treatment at night improves the cardiovascular outcome of patients with HFrEF and OSA [6], while it is less effective in reducing the mortality of patients with CSA [7,8]. Traditional drug therapies for heart failure have no substantial effect on OSA, except for diuretics, which may have a potential negative impact on renal function indices. However, angiotensin-neprilysin receptor inhibitors (ARNIs) have demonstrated a favorable impact on patients with heart failure and sleep apnea, reducing the apnea-hypopnea index (AHI) [9].

The recent introduction of sodium-glucose co-transporter inhibitors (SGLT2i) in heart failure treatment has improved the quality of life by reducing hospitalizations for heart failure-related symptoms [10]. This class of drugs has also shown promise in reducing the incidence of OSAS in patients with type 2 diabetes mellitus, suggesting a potential new therapeutic approach to reducing global cardiovascular risk [11].

Pathophysiology of obstructive sleep apnea syndrome and cardiovascular involvement

Patients with OSA experience continuous cycles of hypoxia and re-oxygenation within a general framework of autonomic nervous system dysfunction and changes in intrathoracic pressures [12]. In the long run, this leads to a pro-inflammatory and pro-fibrotic state characterized by increased circulating cytokines levels, endothelial dysfunction, and hypercoagulability. These changes cause left atrial dilatation and reduced diastolic compliance of the left ventricle, which clinically favor the onset of both cardio- and cerebrovascular events.

The repetitive episodes of airway obstruction and disrupted sleep patterns characteristic of OSAS induce an imbalance in the functioning of the autonomic nervous system. As a consequence, a number of physiological changes occur, including sympathetic overactivity, baroreflex dysfunction, alterations in heart rate variability, and metabolic changes. These lead to cardiovascular consequences such as hypertension, arrhythmias, and heart failure [13].

The cardiac effects of intrathoracic pressure changes and cyclic desaturation and re-oxygenation occur at both atrial and ventricular levels, in both the right and left sections of the heart. In the acute phase, OSA can be responsible for atrial arrhythmic events due to a reduction in the refractory period and conduction rate. It can also induce ventricular events, resulting from increased QT dispersion and activation of arrhythmic triggers. Long-term effects of OSA include left atrial

dilatation, fibrosis, and left ventricular hypertrophy, thus favoring the onset and progression of heart failure [14].

Regarding the effects on ventricular compliance, increased intramural pressures in the left ventricle led to increased oxygen consumption and reduced coronary flow, which, in the context of hypoxia caused by apnea, can induce ischemia and consequent unfavorable ventricular remodeling. Conversely, in the right sections, increased pressures in the pulmonary circle cause a reversal of the pressure and volumetric relationship between the right and left chambers, resulting in a "leftward shift" of the interventricular septum, tricuspid insufficiency, and reduction of the longitudinal systolic function of the right ventricle (Figure 1). The mechanisms described so far are more pronounced in obese patients, those suffering from metabolic syndrome, and those with heart failure with preserved ejection fraction (HFpEF), where chronic deficiency of atrial natriuretic peptide (BNP), increased representation of epicardial adipose tissue (EAT) (Figure 2), and constant inflammation indices are more prominent [15]. All these factors contribute to the progression of OSA.

From heart failure with reduced ejection fraction to central apnea

CSAs are forms of sleep disorders related to higher mortality rates and represent an independent risk factor for morbidity and mortality in HFrEF patients. These consist of an interruption of the respiratory nervous stimulus in the absence of mechanical obstruction and, unlike obstructive forms, do not benefit from the use of CPAP. In these patients, the use of adaptive servoventilation (ASV) improved the apnea-hypopnea index (AHI); however, it was ineffective in correcting sympathetic nervous system activity and was associated with an increased risk of cardiac and all-cause mortality [16].

To summarize, in advanced forms of HFrEF, congestion of the pulmonary circulation leads to hyperstimulation of pulmonary vagal receptors, causing hyperventilation and subsequent hypocapnia. Simultaneously, awakenings caused by activation of the autonomic nervous system (the so-called "fight-or-flight" response) result in abrupt increases in ventilation, lowering pCO₂ values below the ventilation threshold and triggering CSA (Figure 3) [17].

HFrEF patients, who typically have lower than normal expiratory volume and consistently elevated plasma concentrations of N-terminal fragment of the protein precursor BNP (NT-proBNP), often present with CSA forms that are associated with Cheyne-Stokes breathing (CSB). It is believed that the fluid accumulated during the day in the intravascular and interstitial space of the lower limbs is redistributed to the upper respiratory tract during the night, leading to a state of edema that creates an ideal condition for sleep apnea [14].

Effects of sodium-glucose co-transporter type 2 inhibitors on sleep apnea syndromes

Previous research has shown a significant effect of SGLT2i in improving AHI in diabetic patients with OSA, reducing the incidence of cardiovascular and renal complications [18,19]. In particular, the positive effect of gliflozins on OSAs is achieved through weight loss [20] and a reduction in plasma volume due to osmotic diuresis, resulting in a decrease in preload [21]. In obese patients, gliflozins not only reduce fat mass in the abdomen but also mainly in visceral fat. This reduction in visceral fat leads to a decrease in the expression of EAT, which acts as an endocrine organ and significantly contributes to left ventricular remodeling and progression to heart failure in the HFpEF form through the production of pro-inflammatory adipokines [22].

The natriuretic effect of SGLT2i reduces blood pressure and volume overload, which is more prominent in heart failure patients. Unlike traditional diuretics, the diuretic action of SGLT2i induces an euvolemic state, reducing excess fluid. However, this function is limited by the action of vasopressin, which prevents hypotension, dehydration, and consequent renal damage [23].

Furthermore, the cardioprotective effects of SGLT2i include the reduction of oxidative stress and fibrosis, along with an increase in hemoglobin and hematocrit levels [24,25].

Conclusions

There is a close correlation between sleep apnea and heart failure. The two conditions tend to aggravate each other in a vicious circle, progressing from obstructive apnea to refractory central forms, which are resistant to treatment and associated with high mortality.

The addition of SGLT2i, on top of maximal therapy for heart failure, especially in patients with heart failure with preserved ejection fraction, particularly if obese, could have a positive effect on AHI, desaturation indices, and mean nocturnal SO₂ values. This could lead to a reduction in the incidence of sleep apnea phenomena and significantly influence both the progression and prognosis of heart failure, even in patients without type 2 diabetes mellitus. This provides a new therapeutic target in the pharmacological management of these patients.

The natriuretic action of SGLT2i reduces the need for high doses of diuretics, thereby limiting their harmful effects on renal function.

Only a few studies [26] have explored the effects of SGLT2 inhibitors on OSA in patients with HFpEF, highlighting their potential benefits. Further prospective studies on larger populations would be essential to gain a better understanding of the cardioprotective mechanisms of gliflozins and validate their use in clinical practice.

References

1. Redline S, Foody J. Sleep disturbances: time to join the top 10 potentially modifiable cardiovascular risk factors? *Circulation* 2011;124:2049-51.
2. Lyons OD, Bradley TD. Heart failure and sleep apnea. *Can J Cardiol* 2015;31:898-908.
3. Javaheri S. Sleep disorders in systolic heart failure: a prospective study of 100 male patients. The final report. *Int J Cardiol* 2006;106:21-8.
4. Vazir A, Hastings PC, Dayer M, et al. A high prevalence of sleep disordered breathing in men with mild symptomatic chronic heart failure due to left ventricular systolic dysfunction. *Eur J Heart Fail* 2007;9:243-50.
5. Kasai T, Bradley TD. Obstructive sleep apnea and heart failure: pathophysiologic and therapeutic implications. *J Am Coll Cardiol* 2011;57:119-27.
6. Marin JM, Carrizo SJ, Vicente E, et al. Long-term cardiovascular outcomes in men with obstructive sleep apnoea-hypopnoea with or without treatment with continuous positive airway pressure: an observational study. *Lancet* 2005;365:1046-53.
7. Arzt M, Floras JS, Logan AG, et al. Suppression of central sleep apnea by continuous positive airway pressure and transplant-free survival in heart failure: a post hoc analysis of the Canadian Continuous Positive Airway Pressure for Patients with Central Sleep Apnea and Heart Failure Trial (CANPAP). *Circulation* 2007;115:3173-80.
8. Cowie MR, Woehrle H, Wegscheider K, et al. Adaptive servo-ventilation for central sleep apnea in systolic heart failure. *N Engl J Med* 2015;373:1095-105.
9. Jaffuel D, Nogue E, Berdague P, et al. Sacubitril-valsartan initiation in chronic heart failure patients impacts sleep apnea: the ENTRESTO-SAS study. *ESC Heart Fail* 2021;8:2513-26.
10. Nassif ME, Kosiborod M. Effects of sodium glucose cotransporter type 2 inhibitors on heart failure. *Diabetes Obes Metab* 2019;21:s19-23.

11. Sawada K, Karashima S, Kometani M, et al. Effect of sodium glucose cotransporter 2 inhibitors on obstructive sleep apnea in patients with type 2 diabetes. *Endocr J* 2018;65:461-7.
12. Yeghiazarians Y, Jneid H, Tietjens JR, et al. Obstructive sleep apnea and cardiovascular disease: a scientific statement from the American Heart Association. *Circulation* 2021;144:e56-e67. Erratum in: *Circulation* 2022;145:e775.
13. Lombardi C, Pengo MF, Parati G. Obstructive sleep apnea syndrome and autonomic dysfunction. *Auton Neurosci* 2019;221:102563.
14. Cowie MR, Linz D, Redline S, et al. Sleep disordered breathing and cardiovascular disease: JACC state-of-the-art review. *J Am Coll Cardiol* 2021;78:608-24.
15. Verbrugge FH, Omote K, Reddy YNV, et al. Heart failure with preserved ejection fraction in patients with normal natriuretic peptide levels is associated with increased morbidity and mortality. *Eur Heart J* 2022;43:1941-51.
16. Tamisier R, Pépin JL, Woehrle H, et al. Effect of adaptive servo-ventilation for central sleep apnoea in systolic heart failure on muscle sympathetic nerve activity: a SERVE-HF randomised ancillary study. *Eur Respir J* 2023;61:2200384.
17. Bradley TD, Floras JS. Sleep apnea and heart failure: Part II: central sleep apnea. *Circulation*. 2003;107:1822-6.
18. Neeland IJ, Eliasson B, Kasai T, et al. The impact of empagliflozin on obstructive sleep apnea and cardiovascular and renal outcomes: an exploratory analysis of the EMPA-REG OUTCOME trial. *Diabetes Care* 2020;43:3007-15.
19. Tang Y, Sun Q, Bai XY, et al. Effect of dapagliflozin on obstructive sleep apnea in patients with type 2 diabetes: a preliminary study. *Nutr Diabetes* 2019;9:32.
20. Furukawa S, Miyake T, Senba H, et al. The effectiveness of dapagliflozin for sleep-disordered breathing among Japanese patients with obesity and type 2 diabetes mellitus. *Endocr J* 2018;65:953-61.
21. Wojcick BS, Inzucchi SE, Neeland IJ, et al. Ertugliflozin and incident obstructive sleep apnea: an analysis from the VERTIS CV trial. *Sleep Breath* 2023;27:669-72.
22. Obokata M, Reddy YNV, Pislaru SV, et al. Evidence supporting the existence of a distinct obese phenotype of heart failure with preserved ejection fraction. *Circulation* 2017;136:6-19.
23. Zelniker TA, Braunwald E. Mechanisms of cardiorenal effects of sodium-glucose cotransporter 2 inhibitors: JACC state-of-the-art review. *J Am Coll Cardiol* 2020;75:422-34. Erratum in: *J Am Coll Cardiol* 2020;76:1505.
24. Sano M, Goto S. Possible mechanism of hematocrit elevation by sodium glucose cotransporter 2 inhibitors and associated beneficial renal and cardiovascular effects. *Circulation* 2019;139:1985-7.
25. Ekanayake P, Mudaliar S. Increase in hematocrit with SGLT-2 inhibitors - Hemoconcentration from diuresis or increased erythropoiesis after amelioration of hypoxia? *Diabetes Metab Syndr* 2022;17:102702.
26. Monda VM, Gentile S, Porcellati F, et al. Heart failure with preserved ejection fraction and obstructive sleep apnea: a novel paradigm for additional cardiovascular benefit of SGLT2 inhibitors in subjects with or without type 2 diabetes. *Adv Ther* 2022;39:4837-46.

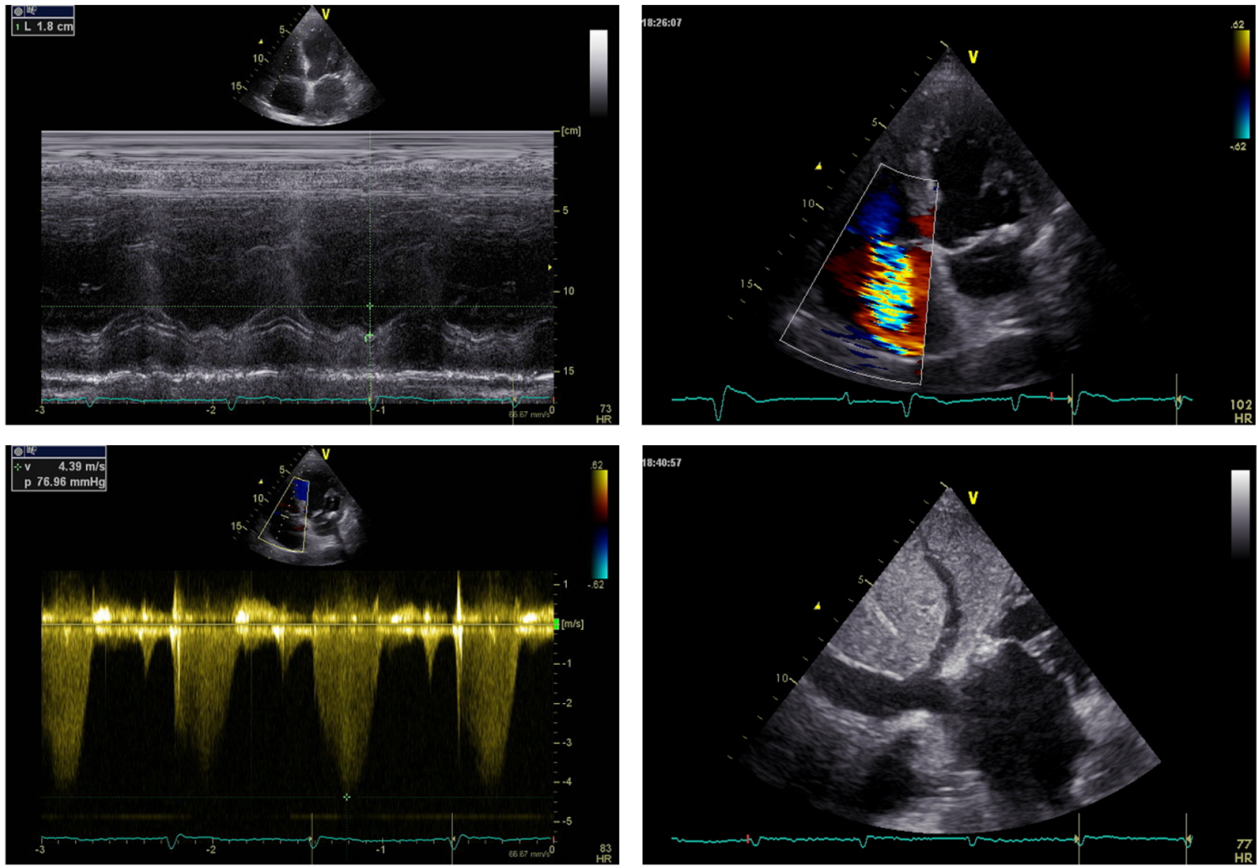


Figure 1. Echocardiographic evaluation of the effects of OSA on pressure variations of the pulmonary circulation and right ventricle.

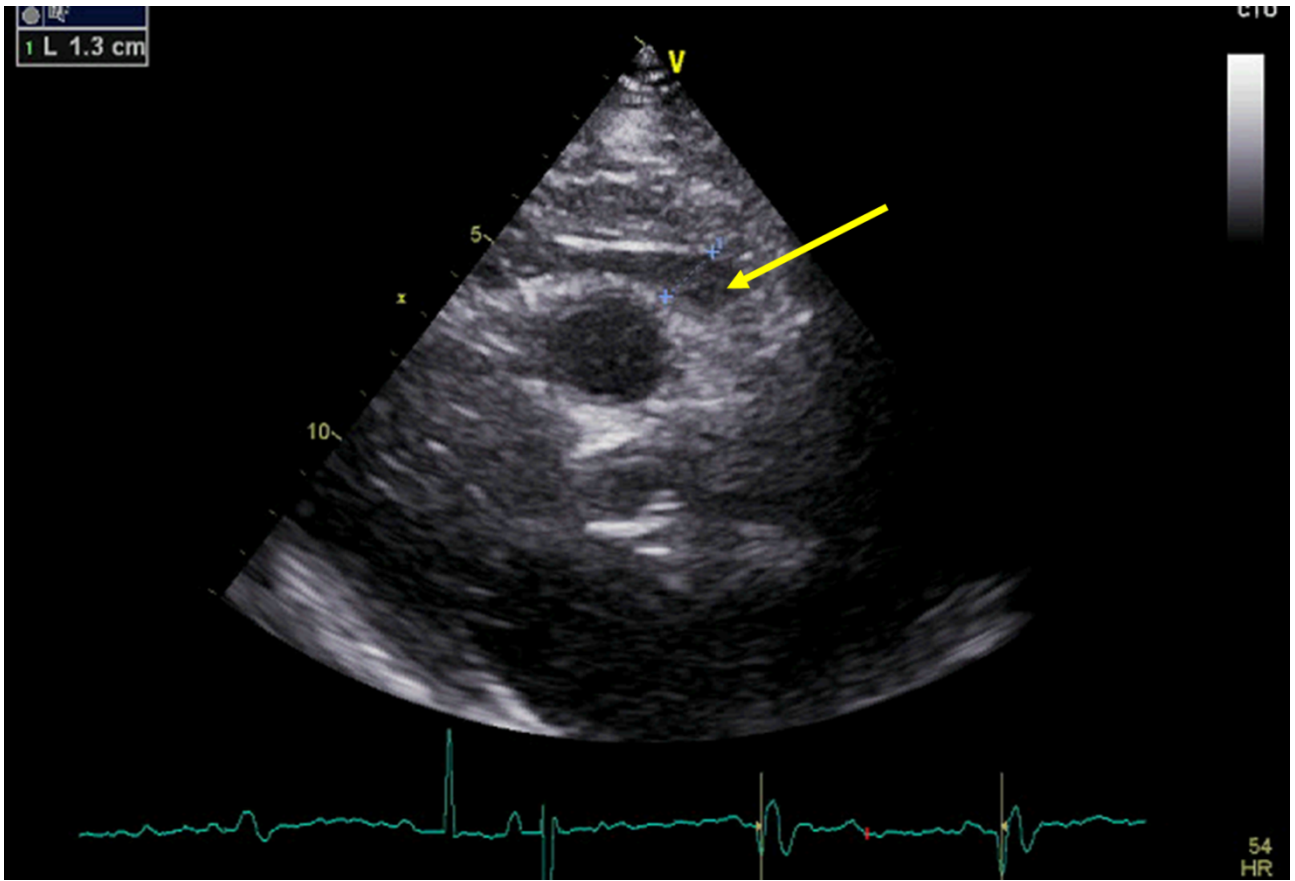


Figure 2. Parasternal long axis view. Epicardial adipose tissue (arrow).

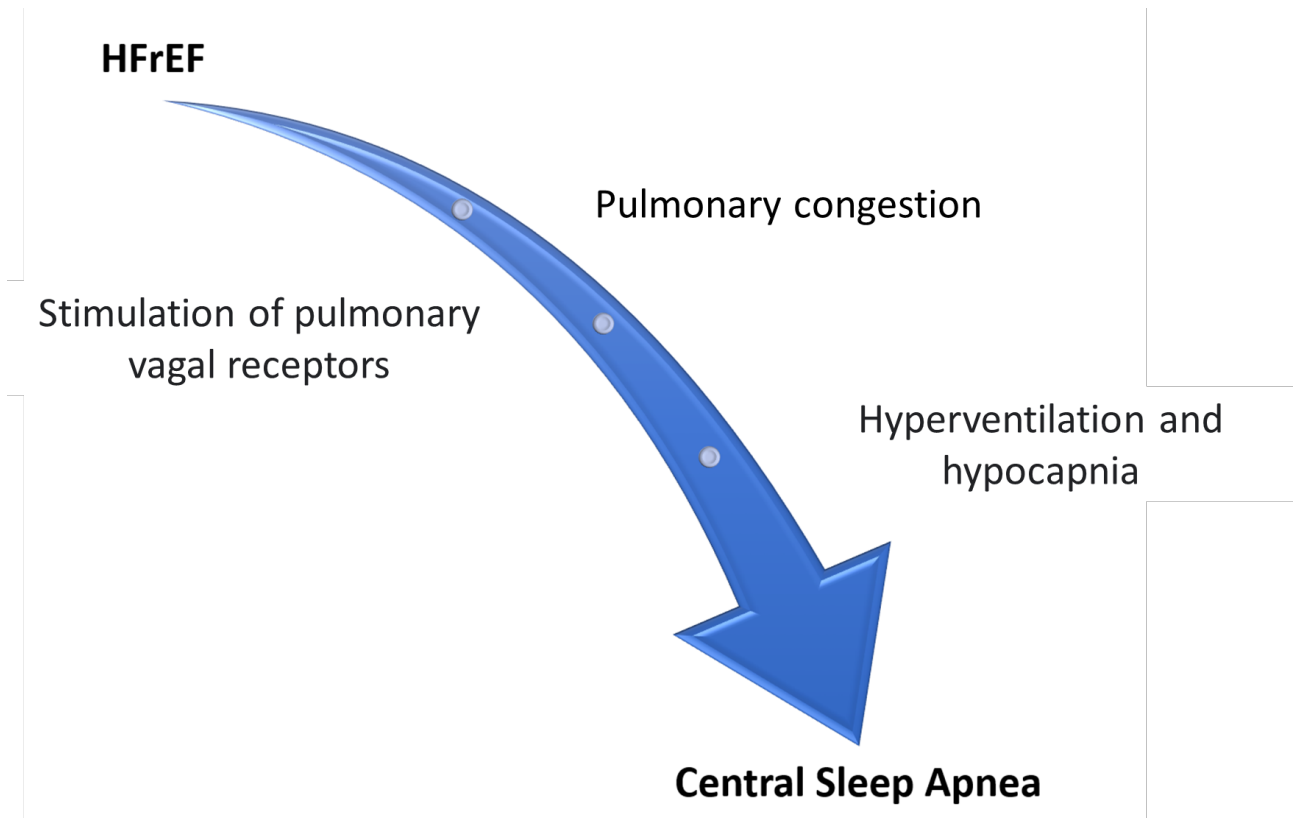


Figure 3. Mechanisms leading from heart failure with reduced ejection fraction to central sleep apnea.