

SUPPLEMENTARY MATERIAL

Respiratory rate-oxygenation index on 3rd day is the best predictor of treatment failure in COVID-19 patients

Federico Raimondi,¹ Stefano Centanni,^{2,3} Fabrizio Luppi^{4,5} Stefano Aliberti,^{6,7}
Francesco Blasi,^{3,8} Paola Rogliani,^{9,10} Claudio Micheletto,¹¹ Marco Contoli,¹²
Alessandro Sanduzzi Zamparelli,¹³ Marialuisa Bocchino,¹³ Paolo Busatto,¹⁴
Luca Novelli,¹ Simone Pappacena,^{1,3} Luca Malandrino,^{1,3}
Giorgio Lorini,¹ Greta Cairoli,¹⁵ Fabiano Di Marco^{1,3}

¹Respiratory Medicine Unit, ASST Papa Giovanni XXIII, Bergamo; ²Respiratory Medicine Unit, ASST Santi Paolo e Carlo, Milan; ³University of Milan; ⁴Department of Medicine and Surgery, University of Milan Bicocca, Milan; ⁵Respiratory Disease Unit, Fondazione IRCCS San Gerardo dei Tintori, Monza; ⁶Department of Biomedical Sciences, Humanitas University, Pieve Emanuele; ⁷Respiratory Unit, IRCCS Humanitas Research Hospital, Rozzano, Milan; ⁸Respiratory Unit and Adult Cystic Fibrosis Center, Fondazione IRCCS Cà Granda Ospedale Maggiore Policlinico, Milan; ⁹“Tor Vergata” University, Rome; ¹⁰Unit of Respiratory Medicine, “Tor Vergata” Hospital Foundation, Rome; ¹¹Respiratory Medicine Unit, University Hospital of Verona; ¹²Department of Translational Medicine, University of Ferrara; ¹³Department of Clinical Medicine and Surgery, Section of Respiratory Diseases, University Federico II, Azienda Ospedaliera dei Colli-Monaldi Hospital, Naples; ¹⁴Pneumology, Ospedale di Lucca, Azienda USL Toscana Nord Ovest, Lucca; ¹⁵FROM Research Foundation, Papa Giovanni XXIII Hospital, Bergamo, Italy

Correspondence: Luca Novelli, Pulmonary Medicine Unit, ASST Papa Giovanni XXIII, Piazza OMS 1 – 24127 Bergamo, Italy.

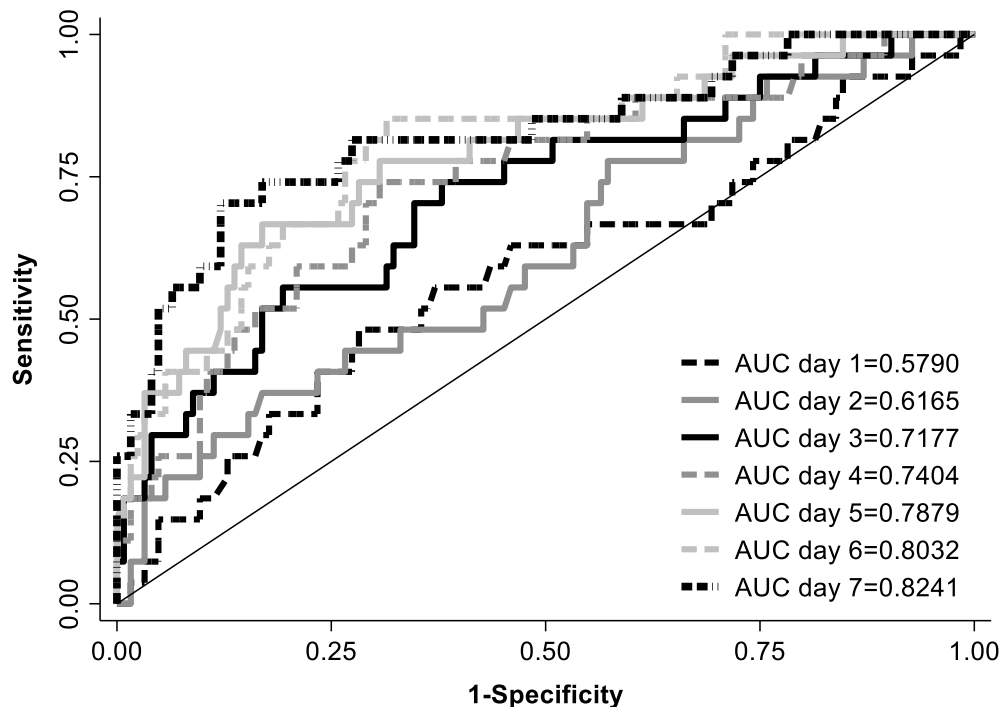
Tel.: +39 3394443927.

E-mail: lnovelli@asst-pg23.it

Key words: ROX index, respiratory failure, COVID-19.

Supplementary Table 1. Detailed pneumological and cardiologic diseases according to the outcome combined.

	N non missing	Total N=227	ETI or Death		p-value
			No N=160	Yes N=67	
Respiratory diseases, N (%)					
COPD	227	14 (6.2)	5 (3.1)	9 (13.4)	0.003
Asthma	227	12 (5.3)	9 (5.6)	3 (4.5)	1.000
Interstitial Lung Diseases	227	4 (1.8)	2 (1.3)	2 (3.0)	0.580
Bronchiectasis	227	2 (0.9)	0 (0.0)	2 (3.0)	0.086
Cardiovascular diseases, N (%)					
Arterial hypertension	227	108 (47.6)	68 (42.5)	40 (59.7)	0.018
Dyslipidemia	227	32 (14.1)	16 (10.0)	16 (23.9)	0.006
Previous myocardial infarction	227	10 (4.4)	3 (1.9)	7 (10.4)	0.008
Valvulopatia	227	3 (1.3)	2 (1.3)	1 (1.5)	1.000
Hypertensive cardiomyopathy	227	9 (4.0)	3 (1.9)	6 (9.0)	0.021
Ischemic cardiomyopathy	227	13 (5.7)	3 (1.9)	10 (14.9)	<0.001
Atrial fibrillation	227	17 (7.5)	8 (5.0)	9 (13.4)	0.049
Arterial vasculopathy	227	11 (4.8)	8 (5.0)	3 (4.5)	1.000



Supplementary Figure 1. Receiver operator characteristic curves of respiratory rate-oxygenation index at day 1 to 7 for outcome endotracheal intubation and death combined.