



Monaldi Archives for Chest Disease

eISSN 2532-5264

<https://www.monaldi-archives.org/>

Publisher's Disclaimer. E-publishing ahead of print is increasingly important for the rapid dissemination of science. The **Early Access** service lets users access peer-reviewed articles well before print / regular issue publication, significantly reducing the time it takes for critical findings to reach the research community. These articles are searchable and citable by their DOI (Digital Object Identifier).

The **Monaldi Archives for Chest Disease** is, therefore, e-publishing PDF files of an early version of manuscripts that have undergone a regular peer review and have been accepted for publication, but have not been through the typesetting, pagination and proofreading processes, which may lead to differences between this version and the final one.

The final version of the manuscript will then appear in a regular issue of the journal.

E-publishing of this PDF file has been approved by the authors.

All legal disclaimers applicable to the journal apply to this production process as well.

Monaldi Arch Chest Dis 2024 [Online ahead of print]

To cite this Article:

Sordelli C, Verde R, Fele N, et al. **A case of a huge aortic pseudo-aneurysm following aortic bioprosthetic endocarditis: the key role of 3D echocardiography.** *Monaldi Arch Chest Dis* doi: 10.4081/monaldi.2024.3077

 ©The Author(s), 2024
Licensee [PAGEPress](#), Italy

Note: The publisher is not responsible for the content or functionality of any supporting information supplied by the authors. Any queries should be directed to the corresponding author for the article.

All claims expressed in this article are solely those of the authors and do not necessarily represent those of their affiliated organizations, or those of the publisher, the editors and the reviewers. Any product that may be evaluated in this article or claim that may be made by its manufacturer is not guaranteed or endorsed by the publisher.



A case of a huge aortic pseudo-aneurysm following aortic bioprosthetic endocarditis: the key role of 3D echocardiography

Chiara Sordelli,¹ Raffaele Verde,¹ Nunzia Fele,¹ Sara Hana Weisz,¹ Laura Severino,¹
Alessandro Perrella,² Angela Guarino,¹ Emilio Di Lorenzo,¹ Sergio Severino¹

¹Department of Cardiology, AORN Ospedali dei Colli-Cotugno, Naples; ²Department of Infectious Disease, AORN Ospedali dei Colli-Cotugno, Naples, Italy

Correspondence: Chiara Sordelli, Department of Cardiology, AORN Ospedali dei Colli-Cotugno, Naples, Italy.

Tel.: 366 9386715.

E-mail: sordellichia@libero.it

Contributions: all the authors made a substantial intellectual contribution, read and approved the final version of the manuscript and agreed to be accountable for all aspects of the work.

Conflict of interest: the authors declare that they have no competing interests, and all authors confirm accuracy.

Ethics approval and consent to participate: no ethical committee approval was required for this case report by the department, because this is a case report and does not contain any studies.

Patient consent for publication: the patient gave his written consent to use his personal data for the publication of this case report and any accompanying images.

Funding: none.

Availability of data and materials: all data underlying the findings are fully available.

Abstract

Infective endocarditis (IE) is a life-threatening condition with high morbidity and mortality rates, making early diagnosis and intervention crucial. This report details the case of a 47-year-old male with a history of mechanical prosthetic aortic valve replacement, presenting with pyrexia and diagnosed with aortic bioprosthetic endocarditis leading to a massive aortic pseudoaneurysm. This shows that 3D transesophageal echocardiography is much more useful than regular 2D imaging for finding problems with IE, which makes surgical planning and intervention more precise.

Key words: aortic pseudo-aneurysm, 3D echocardiography.

Introduction

Infective endocarditis (IE) is a complex cardiovascular condition characterized by microbial infection of the endocardial surface of the heart, primarily affecting heart valves. It is associated with severe complications, including heart failure, systemic embolisms, and the formation of intracardiac abscesses and pseudoaneurysms. Despite advancements in medical and surgical treatments, IE continues to pose significant challenges due to its diverse presentations and the critical need for timely diagnosis and intervention. Traditionally, two-dimensional transesophageal echocardiography (2D TEE) has been the cornerstone for the diagnosis and management of IE, offering detailed images of valvular structures and their function [1]. However, the advent of three-dimensional transesophageal echocardiography (3D TEE) has markedly enhanced our diagnostic capabilities, enabling more precise visualization of cardiac structures and pathologies. 3D TEE provides comprehensive views of the heart valves and associated complications, facilitating a better understanding of the disease's extent and complexity. This imaging modality has become invaluable in the planning and guidance of surgical interventions, particularly in patients with complicated IE, where precise anatomical details are crucial for successful outcomes. The role of 3D echocardiography in IE management has evolved rapidly, supported by a growing body of literature that underscores its advantages over traditional 2D imaging techniques. This introduction seeks to explore the impact of 3D TEE on the diagnosis and treatment of IE, emphasizing its role in the management of this infectious disease [2].

Case Report

A 53-year-old man presented to the cardiology infectious Department for eleven days of recurrent, relapsing fevers with night sweats and generalized weakness. His past medical history was significant for previous biologic prosthetic aortic valve replacement and for history of ischemic heart disease with previous angioplasty, arterial hypertension, type II diabetes mellitus. Additional pertinent history was negative for recent surgeries, recent travel, previous intravenous drug use, and recent dental infection or treatment. On physical examination, the patient had a temperature of 38.3°C, a heart rate of 105 beats/min, blood pressure of 115/70 mmHg, and a respiratory rate of 22 breaths/min. On cardiovascular examination, a 2/6 blowing systolic murmur was heard best at the right and left upper sternal border.

There was no evidence of cardiac failure, and there were no peripheral stigmata of IE. His respiratory, abdominal, musculoskeletal, and neurologic examinations were normal.

Urinalysis revealed large amounts of blood but was otherwise negative. Laboratory tests showed an elevated white blood cell count (12.7×10^9 ; reference range $4.8-10.8 \times 10^9$ K/uL), elevated erythrocyte sedimentation rate, elevated C-reactive protein and elevated procalcitonin. He additionally was found to have low hemoglobin of 9.7 g/dL. A chest X-ray performed at that time was unremarkable. The patient was admitted for severe sepsis with concern for possible endocarditis of his biologic aortic valve. Two blood cultures were drawn on admission, and empiric antibiotic therapy with daptomycin was started. Both blood cultures from admission returned two days later growing *Staphylococcus Epidermidis* starting a specific antibiotic therapy. A transthoracic echocardiogram (TTE) showed an ejection fraction of 60% to 65% and mild left ventricular hypertrophy with grade II diastolic dysfunction. It also showed thickening of the biocusps with a periprosthetic anechoic image without aortic insufficiency. Owing to continued high clinical suspicion for IE, a transesophageal echocardiogram (TEE) was then performed showing only a pulsatile perivalvular echo free-space with colour Doppler flow inside suggestive of an aortic pseudoaneurysm (Figure 1). For a better evaluation of morphologic characteristics we carried out volumetric reconstructions with 3D. 3D-TEE imaging provides better morphological assessment of aortic pseudoaneurysm. 3D TEE clearly demarcates an irregularly shaped of perivalvular cavity and through multiplanar reconstruction allowed a correct evaluation of the area and circumference (Figures 2 and 3). Cardiac Tc was performed and confirmed our diagnosis. Possible alternate sources of *S.Epidermidis* bacteremia were subsequently ruled out by computed tomography (CT) of the abdomen and pelvis and a whole-body white blood cell scan. The patient underwent cardiac surgery to replace the aortic valve with a new biological prosthesis with excellent results. To date, three and a half months after the completion of antibiotics, the patient remains afebrile and is doing well clinically, with no evidence of infection recurrence.

Discussion

The field of 3D echocardiography has seen substantial progress over the past decade, with significant implications for the management of infective endocarditis. Scientific literature increasingly supports the superiority of 3D TEE over 2D TEE, particularly in its ability to offer detailed and accurate assessments of valvular anatomy, vegetations, abscesses, and pseudoaneurysms associated with IE. One of the primary advantages of 3D TEE is its ability to provide en face views of the heart valves, which are not possible with 2D imaging [2]. This perspective is crucial for evaluating the extent of valve involvement and for assessing the size and morphology of vegetations, thereby aiding in risk stratification and therapeutic decision-making. Studies have shown that 3D TEE has a higher sensitivity and specificity in detecting

valvular lesions and perivalvular complications, such as abscesses and pseudoaneurysms, which are pivotal factors influencing the surgical approach and timing. Furthermore, 3D TEE plays a vital role in preoperative planning and intraoperative guidance [3,4]. By providing a realistic assessment of the cardiac anatomy, 3D imaging enables surgeons to tailor their surgical approach, potentially reducing operative times and improving surgical outcomes. The ability to visualize complex spatial relationships and the extent of disease involvement helps in predicting the feasibility of valve repair versus replacement, which is a critical consideration in managing IE patients [5,6]. Despite these advantages, the integration of 3D TEE into routine clinical practice requires specialized training and experience. The interpretation of 3D images is more complex and time-consuming than traditional 2D echocardiography. However, the potential benefits for patient management and outcomes justify the investment in training and infrastructure to support the widespread adoption of this technology [7]. It should be underlined anyway that cardiac CT is also accurate for diagnosing perivalvular and periprosthetic complications of IE (abscesses, pseudoaneurysms, and fistulae) and is recommended in both NVE and PVE if TEE is not conclusive or not feasible. In addition, cardiac CT is a valuable alternative for non-invasive assessment of coronary artery disease (CAD) before cardiac surgery in patients with IE and can significantly influence subsequent surgical decision-making. In conclusion, 3D echocardiography represents a significant advancement in the diagnostic and therapeutic landscape of infective endocarditis. Its ability to provide unparalleled insights into cardiac anatomy and pathology has the potential to revolutionize the management of this challenging condition. As the technology continues to evolve and become more accessible, it is poised to become an indispensable tool in the armamentarium against IE.

Conclusions

Decision making in IE is complex. The most common indications for early surgery are development of heart failure, uncontrolled infection or risk of embolism. In particular uncontrolled infection is commonly due to perivalvular abscess formation. 3D-TOE allows rapid, accurate, unique assessment of IE complication through unlimited multiplanar reconstructions, volume-rendered real-time imaging and colour full-volume regurgitation assessment which may not always possible on 2D-TTE or 2D-TOE. This case demonstrate how traditional 2D TEE may provide incomplete anatomical information. 3D imaging improved identification and characterisation of the complications of IE. The complementary data provided aids in decision making with regard to both requirements for timing and planning of surgery.

References

1. Habib G, Hoen B, Tornos P, et al. Guidelines on the prevention, diagnosis, and treatment of infective endocarditis: the task force on the prevention, diagnosis, and treatment of infective endocarditis of the European Society of Cardiology. Endorsed by the European Society of Clinical Microbiology and Infectious Diseases and the International Society of Chemotherapy for Infection and Cancer. *Eur Heart J* 2009;30:2369-413.
2. Bhattacharyya S, Bahrami T, Rahman-Haley S. Comprehensive assessment of complications of infective endocarditis by 3D transesophageal echocardiography. *Int J Cardiol* 2014;174:e87-9.
3. Khan M, De Sousa R, Rai K, Nasir Khan J. Unique characterization of complex endocarditic vegetations using 3D TOE. *Echo Res Pract* 2020;7:15-7.
4. Sordelli C, Fele N, Mocerino R, et al. Infective endocarditis: echocardiographic imaging and new imaging modalities. *J Cardiovasc Echogr* 2019;29:149-55.
5. Taskesen T, Goldberg SL, Gill EA. Role of three-dimensional echocardiography in management of acquired intracardiac shunts. *Echocardiography* 2014;31:E250-3.
6. Galzerano D, Kinsara AJ, Di Michele S, et al. Three dimensional transesophageal echocardiography: a missing link in infective endocarditis imaging? *Int J Cardiovasc Imaging* 2020;36:403-13.
7. Galzerano D, Pergola V, J Kinsara A, et al. Right-sided infective endocarditis and pulmonary embolism: a multicenter study. *Monaldi Arch Chest Dis* 2022;92:2251.

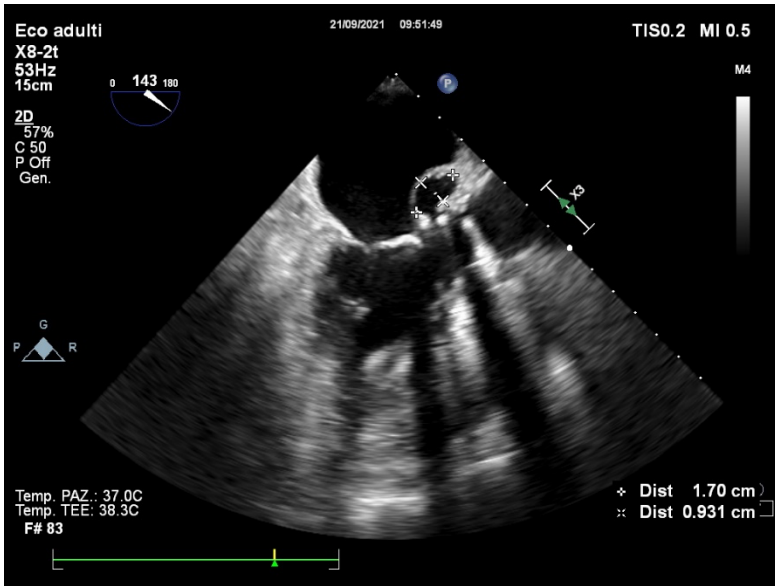


Figure 1. 2D transesophageal echocardiography images of an aortic pseudoaneurysm.

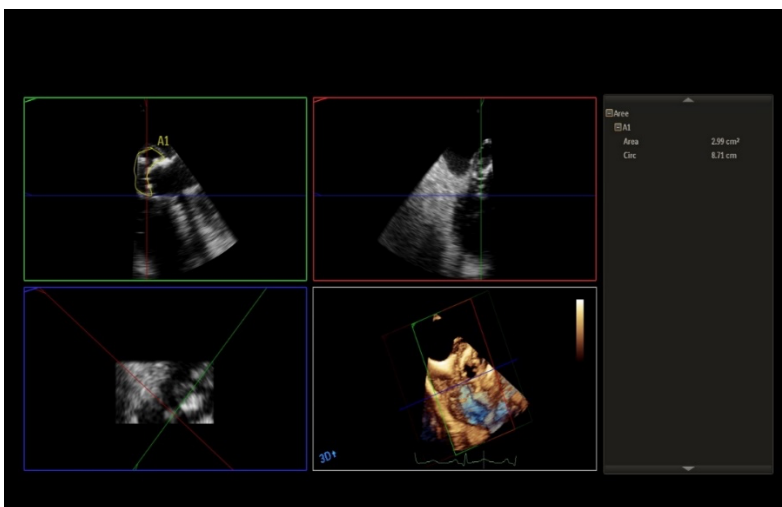


Figure 2. 3D transesophageal echocardiography. Multiplane reconstruction for evaluation of pseudoaneurysm area and circumference.

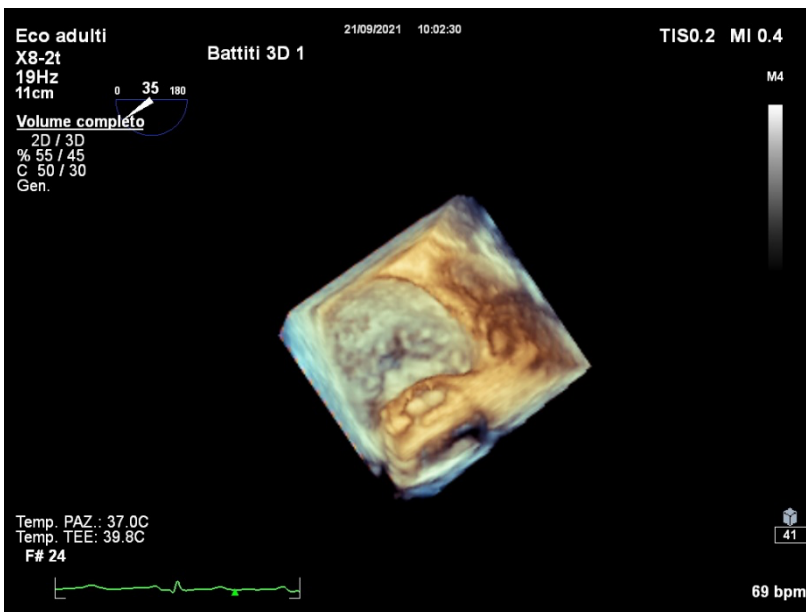


Figure 3. Real-time 3D transesophageal echocardiography. Aortic pseudoaneurysm.